

www.SIMPACK.com

Software Update

SIMPACK 9.1.1

We are pleased to inform you that SIMPACK Version 9.1.1 has been officially released. SIMPACK 9.1.1 is a minor release based on SIMPACK 9.1. Detailed information about updates and new features can be found in the release notes section of the SIMPACK documentation.

New Features

SIMPACK Pre and SIMPACK Post

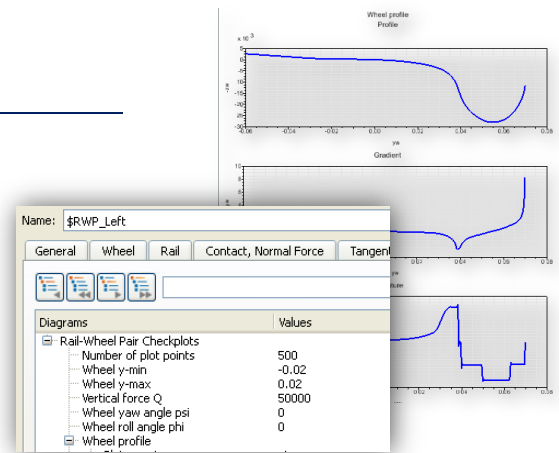
Increased graphics performance of SIMPACK Post and SIMPACK Pre has been achieved by upgrading the graphics engine.

SIMPACK Rail

Increased graphics performance of Track and Rail check plots.

SIMPACK Pre and SIMPACK Wizard

Miscellaneous improvements.



More info about

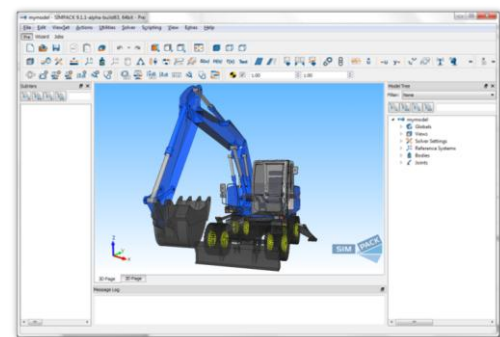
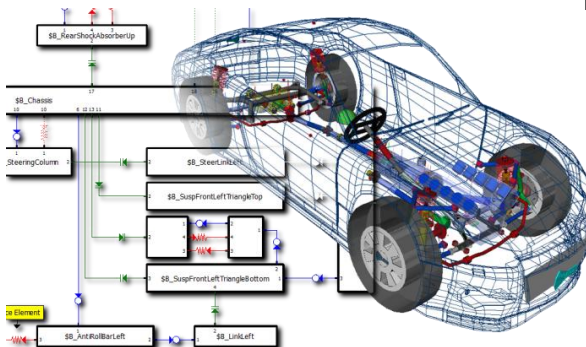
SIMPACK 9

SIMPACK 9 is a major milestone in the development of SIMPACK. With a completely new architecture, SIMPACK has now opened the door to a wealth of new functionalities and features.

In SIMPACK 9 user can take advantage of: a new graphical user interface, advanced parallel solver technology, a state-of-the-art FE interface, an object oriented scripting engine, easy to use unit handling, and the SIMPACK Wizard, which enables easy setup of standardized models and analysis processes – to name just a few.

Redesigned User Interface

SIMPACK 9 comes with a completely redesigned user interface that drastically increases user productivity for modeling any kind of mechanical system.



Topology Diagram View

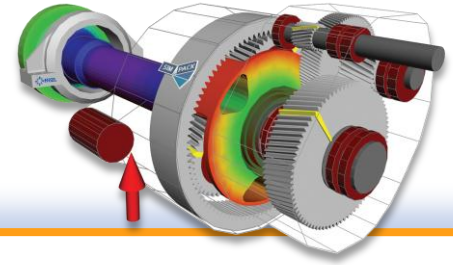
SIMPACK 9 features a new "topology diagram" to view and check the model structure at a glance.



Leading MBS Technology
for Technology Leaders

SIMPACK

Multi-Body Dynamics Simulation Software



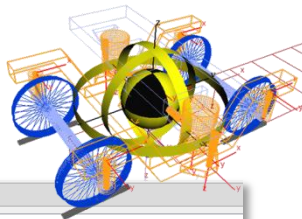
www.SIMPACK.com

More info about

SIMPACK 9

The Job Table

A new job control view helps the user to keep track of the last simulations.



Job Id	Start Time	Finish Time	CPU Time
1	17 Oct 2011 13:39:29	17 Oct 2011 13:41:07	0:01:26
2	17 Oct 2011 17:05:53	17 Oct 2011 17:07:29	0:01:31

```

Message Log
** Pre-calculating track layout
** Cartographic track integration
** End of track integration

Mass properties of: $B_Frame
Mass = 2615 kg
CG wrt Isys = [0, 0, -0.6] m
Main inertia axis wrt Isys = [0; 1; 0] [1; 0; 0] [0; 0; -1]
Main inertia values = [1476, 1722, 3076] kg m^2

Body: SB_Frame

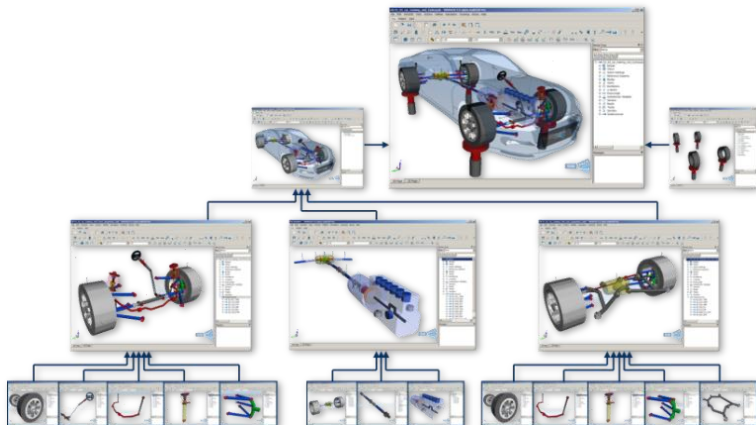
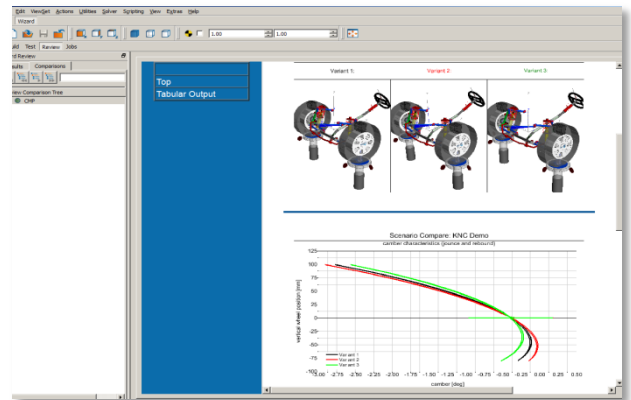
```

Mass and Inertia Calculation and Visualization

Mass, center of gravity and inertia of any geometry, simple or complex, can be computed by SIMPACK. The mass properties of individual Bodies and Subsystems are visualized in the 3D graphics.

SIMPACK Wizard

SIMPACK 9 features a new easy to use "SIMPACK Wizard" mode to deploy complete database of Multi-body models, simulation scenario and workflows.



This is only a small overview of the new features of SIMPACK 9. Please contact your local distributor for more information.