



Accurate · Fast · Robust · Versatile

SIMPACK EXCEL PLUG-IN

Add-On Module

What is SIMPACK?

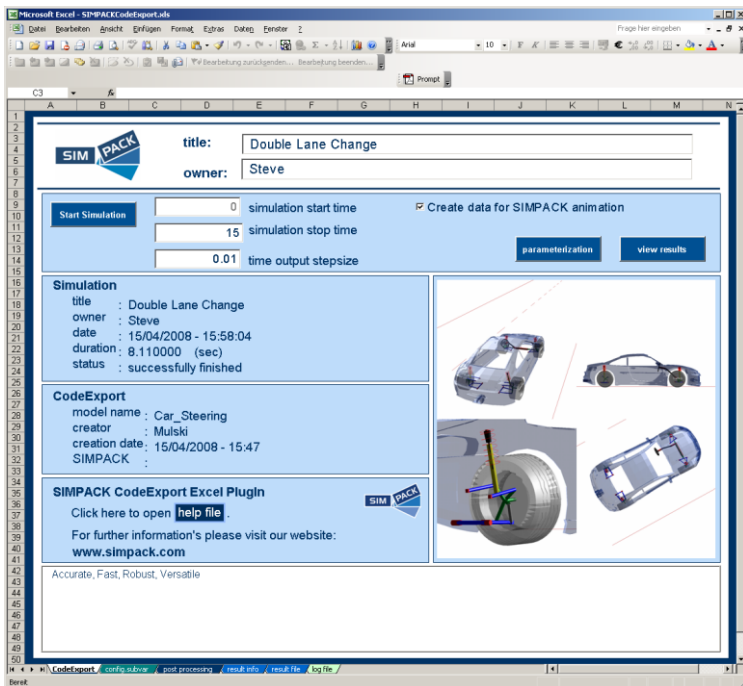
SIMPACK is a general-purpose multi-body simulation (MBS) software tool which is used to aid the development of any mechanical or mechatronic device, ranging from single components through to complete systems (e.g. wind turbines, vehicles, and high performance Formula 1 engines). All SIMPACK products are 100% compatible.

What is SIMPACK Excel Plug-In?

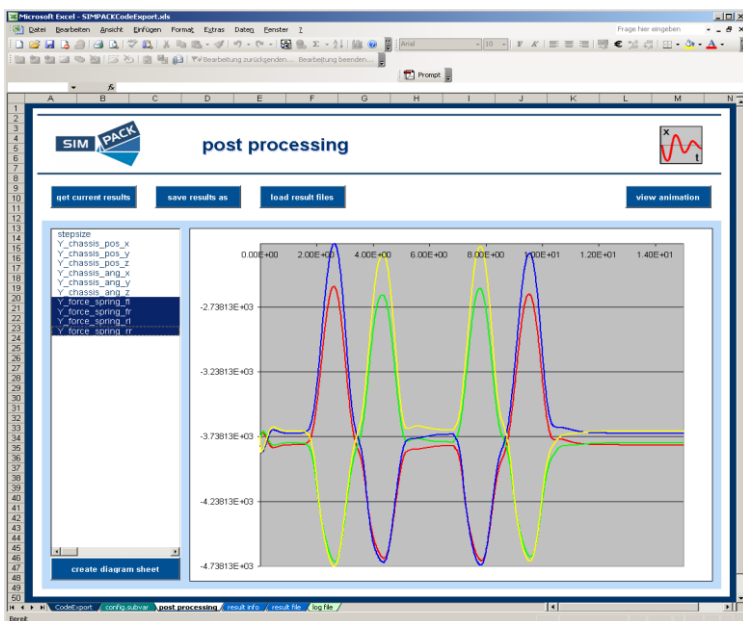
SIMPACK Excel Plug-In is an add-on module to automatically generate model specific user interfaces for Microsoft Excel. SIMPACK Code Export creates Fortran- or C-code from any SIMPACK model and brings the flexibility and functionality of a general purpose MBS tool to a simple environment. Users can now configure models, run simulations and postprocess results all within Excel. With this functionality, SIMPACK has now opened the door for non-multi-body experts to work with complex SIMPACK models. The same SIMPACK models used for motion and vibration analysis can now be used in a countless number of other applications areas independent of SIMPACK.

Applications:

- Simulation of any SIMPACK model in Excel
- Kinematic and dynamic simulation
- Geometric modification
- Optimization



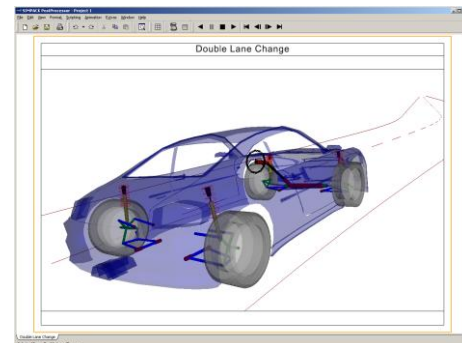
Excel Code Export Plug-In: title page to configure and run simulation



MS Excel: post-processing of calculation results

Highlights:

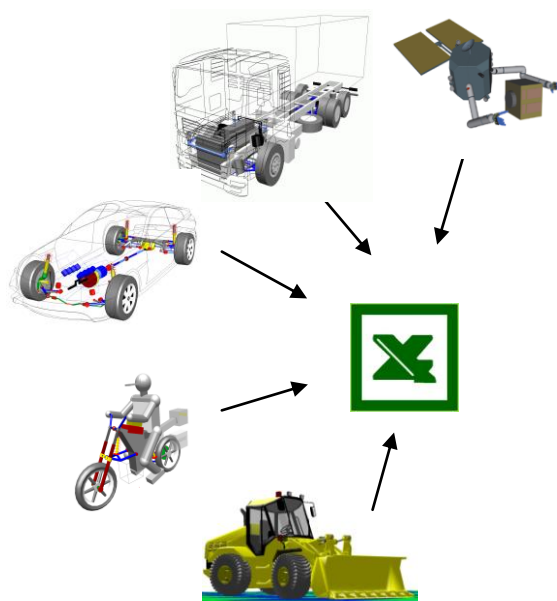
- Complex SIMPACK models can be run and analyzed by non-multi-body experts
- Easy creation of Excel Interface for user specific models
- Exported user defined models, i.e. not restricted to predefined templates
- Setting of access rights for Excel users
- No training or knowledge on MBS code necessary for analyses of complex 3D models



Animation Viewer: post-processing of 3D results

Features:

- Full model parameterization
- Editing of simulation parameters possible
- Easy model modification:
 - substitutions variables
 - exchange Input Functions, Function Arrays and Track Files
- Model confidentiality
- Usage of tire models: TM-Easy, MF-Tyre, MF-Swift, etc.
- Easy implementation of user specific code
- Usage of advanced SIMPACK integrators
- No SIMPACK installation required
- Simulation results can be plotted directly in Excel
- SIMPACK Viewer for 3D animation
- SIMPACK PostProcessor for full postprocessing



SIMPACK Excel Plug-In brings any type of customer specific multi-body model to Microsoft Excel

SIMPACK Customer Solution Centers

Germany

Worldwide Headquarters

SIMPACK AG
Friedrichshafener Strasse 1
82205 Gilching, Germany

Phone: +49 (0)8105 77266-0
Fax: +49 (0)8105 77266-11
sales@SIMPACK.de
www.SIMPACK.com

USA

SIMPACK US Inc.
Robert Solomon
25925 Telegraph Road, Suite 101
Southfield Michigan 48033, USA

Phone: +1 248 996-8750
Fax: +1 248 996-8930
Mobile: +1 251 923 9566
info@SIMPACK-US.com
www.SIMPACK.com

France

SIMPACK France S.A.S.
Immeuble "Le President",
4eme étage
40, Avenue Georges Pompidou
69003 Lyon, France

Phone : +33 (0)437 5619-71
info@SIMPACK.fr
www.SIMPACK.com

Japan

SIMPACK Japan K.K.
5F Okubo Bldg.
2-4-12 Yotsuya
Shinjuku-ku
Tokyo 160-0004, Japan

Phone: +81 (0)3 5360-6631
Fax: +81 (0)3 5360-6632
info@SIMPACK.jp
www.SIMPACK.jp

Great Britain

SIMPACK UK Ltd.
The Whittle Estate
Cambridge Road
Whetstone
Leicester LE8 6LH, UK

Phone: +44 (0)116 27513-13
Fax: +44 (0)116 27513-33
Mobile: +44 (0)7767 416 656
info@SIMPACK.co.uk
www.SIMPACK.co.uk