

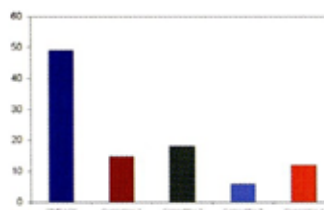


As reported on page one of this SIMPACK News, SIMPACK Wheel/Rail by the end of 2002 officially became the common multi-body simulation tool of the world's largest railway company Bombardier Transportation. The second worlds largest manufacturer, Siemens Transportation

Systems, has been using SIMPACK exclusively since 1995. With these two leading companies and its strong presence at many other railway manufacturers and operators all over the world from Alstom to Vossloh, SIMPACK is now clearer than ever the number one in this field - holding approximately 50% of the entire world market.

Looking at SIMPACK Wheel/Rail's history since the early nineties, when the first tests of a wheel-rail contact element were running, the SIMPACK team always under-

stood the success of their product as an additional challenge and as commitment towards its users - and still does. Therefore the additional potential of SIMPACK Wheel /Rail will immediately be re-invested in the product itself by means of the development of new features and additional support staff.



New University and Research Licences since January 2002

- TU Graz, Institut für Verbrennungsmotoren, Arbeitsbereich Fahrzeugtechnik, Austria
- FH Nürnberg, Germany
- RWTHAachen, Germany
- Universität Hamburg, Germany
- Universität Freiberg, Germany

New Commercial Licences since January 2002

- Alstom LHB GmbH, Germany
- AMST, Austria
- AnsaldoBreda Costruzioni Ferroviarie S.p.A., Italy
- Bombardier Transportation
- DaimlerChrysler AG Motorsport, Germany
- Eurocopter, Germany
- Ilmore Racing Engines Ltd., England
- JR Rail, Japan
- Land Rover, England
- Logomotive GmbH, Germany
- Siemens A & D, Germany
- Stork, The Netherlands
- Tokyu Car, Japan
- Toyota, Japan
- UPM - ETSI Industriales, Spain
- ZF-Friedrichshafen AG, Germany
- ZF-Sachs AG, Germany